



HMS Florida
Quarterly Report – October/November/December 2020
Sarah Miller, Director
Patty Meyers, HMS Florida Project Manager
Kassie Kemp, HMS Florida Database Manager

Assistance to DHR: HMS Project Management Activities

The main focus of this quarter was permitting to meet December’s deliverable of an additional 150 monitored sites. In addition, Patty worked with the directors to identifying which sites would be monitored prior to this date and which would be included in the first quarter of 2021. She also worked closely DHR/BAR to ensure that high priority sites were included in this list.

Patty continued to work with the regions and State land managers to permit sites on State-owned lands. She received approval for four additional permits from BAR (Fred Gannon Rocky Bayou, Fish Island, Bill Baggs Cape Florida, and Econfina State Parks) Patty also worked with regional staff on 5 additional permits (Anastasia Multi-Park, Fakahatchee Strand Preserve State Park, John Pennekamp Coral Reef State Park, Everglades and Francis S. Taylor Wildlife Management District, Oleta River State Park and Werner-Boyce Salt Springs State Park). Patty also worked closely with the Forest Service on a permit for Blackwater River State Forest, which will be our first large forestry permit. In addition, she received a 3D scanning permit for Butler’s Mill, which was scanned as part of the 3D scanning deliverable.

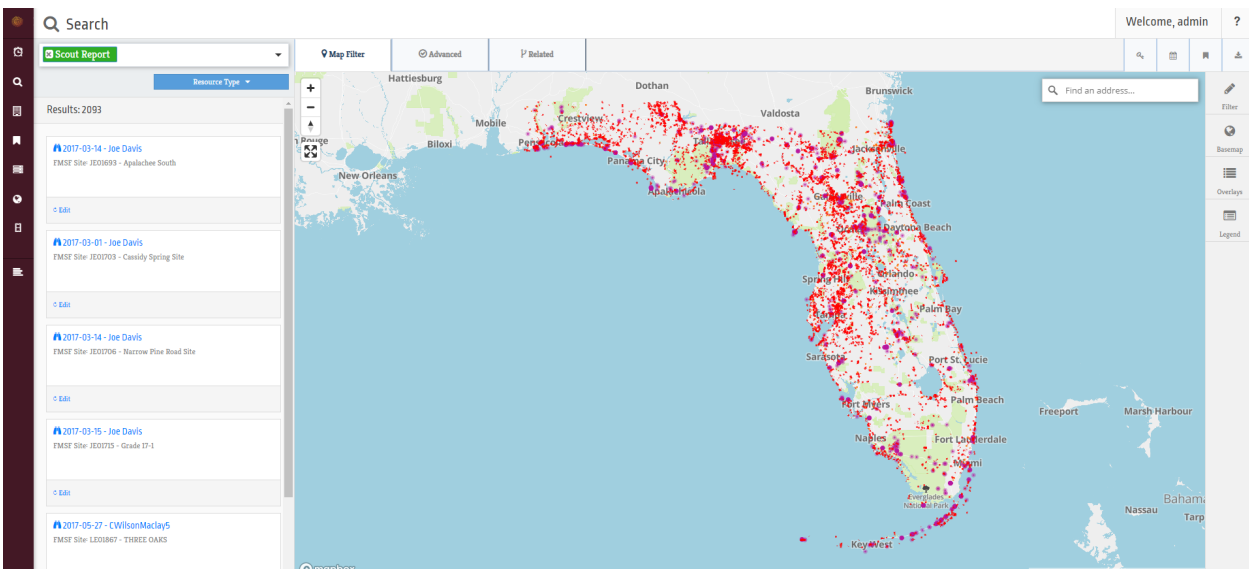


Socially distant 3D Scanning of Butler’s Mill (LE05997) at the Lake Jackson Archaeological Site, Tallahassee, FL

Volunteer Opportunities: HMS Database Management Activities

Kassie's main focus this quarter was working on QRQC and updates for the HMS Florida Arches Database. She communicated with scouts to help them manage their accounts. She, along with intern Kelly Sears, worked to organize and submit backlog Google form data and associated photos to the database. Kassie worked with Adam Cox of Legion GIS to form a plan of action for future upgrades and changes to the Arches system now that his contract under the Special Categories Grant is approved. She created a list of sites that Adam submitted to Arches to complete the second FMSF site update to the database.

Kassie focused on content for the Special Categories Grant providing support for ongoing 1A-32 permitting of State-owned lands. She aided FPAN staff by creating maps and other supplemental information to support this effort. She also worked on statistics for the benchmark goal of 300 sites monitored we hit at the end of December and aided in the 3D scanning of the House of Refuge Midden.



The backlog data entry has resulted in a database of over 2000 Scout Reports. The recent FMSF update added 220 archaeological sites, 185 structures, and 43 cemeteries to the database.